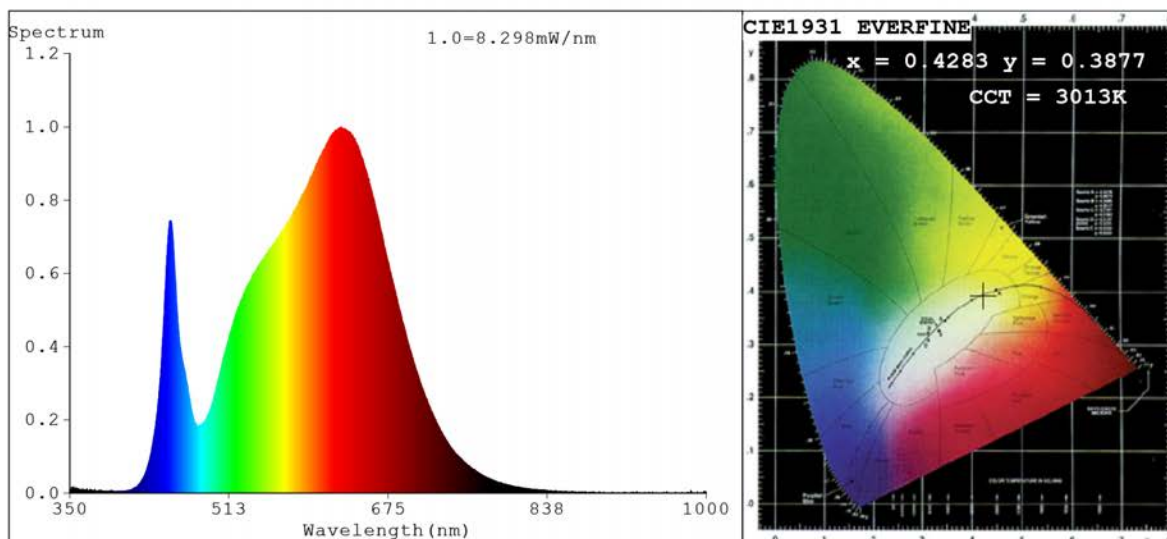


Spectrum Test Report



Color Parameters:

Chromaticity Coordinate: $x=0.4283$ $y=0.3877$ $u'=0.2521$ $v'=0.5135$
 CCT=3013K (Duv=-0.0055) Dominant WL:Ld =585.0nm Purity=44.9%
 Ratio:R=24.5% G=72.8% B=2.7%; Peak WL:Lp=627.3nm FWHM=166.1nm
 Render Index:Ra=93.1 CRI=90.4 TM30:Rf=88 Rg=104
 R1 =95 R2 =96 R3 =94 R4 =92 R5 =94 R6 =93 R7 =93
 R8 =88 R9 =73 R10=88 R11=91 R12=77 R13=95 R14=96 R15=94

Photo Parameters:

Flux = 407.9 lm Eff. : 28.15 lm/W Fe = 1.491 W

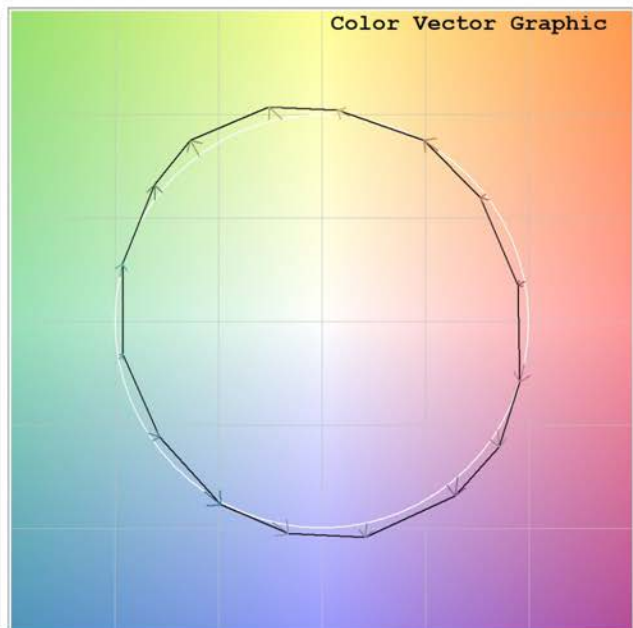
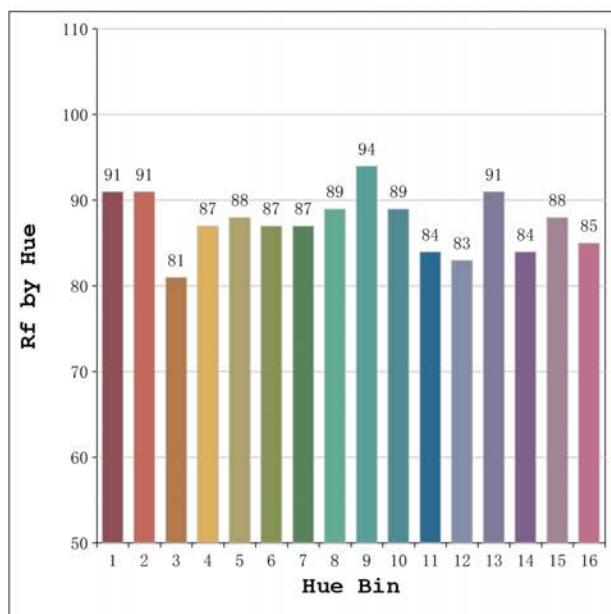
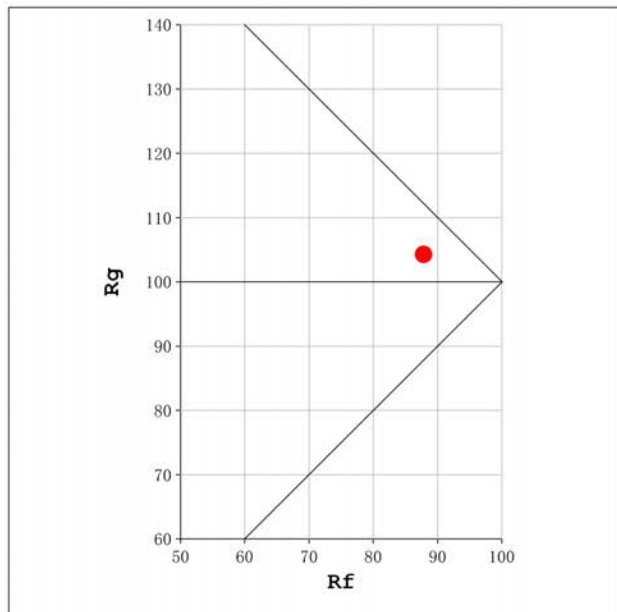
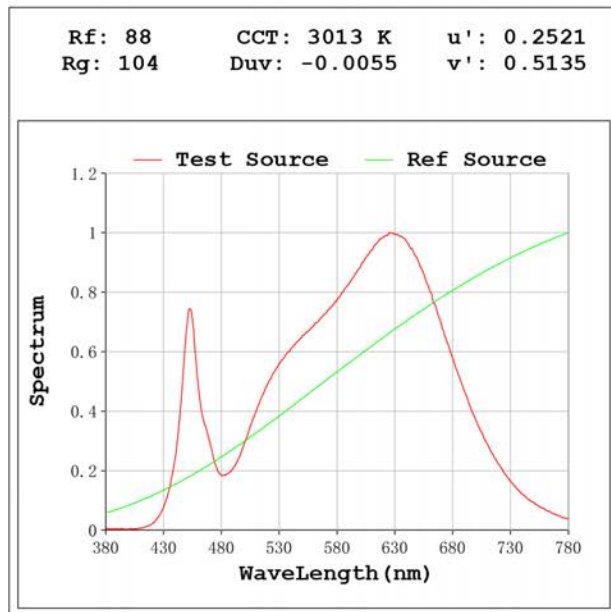
Electrical parameters:

V = 23.998 V I = 0.6039 A P = 14.49 W PF = 1.000

Status: Integral T = 3289 ms Ip = 49552 (76%)

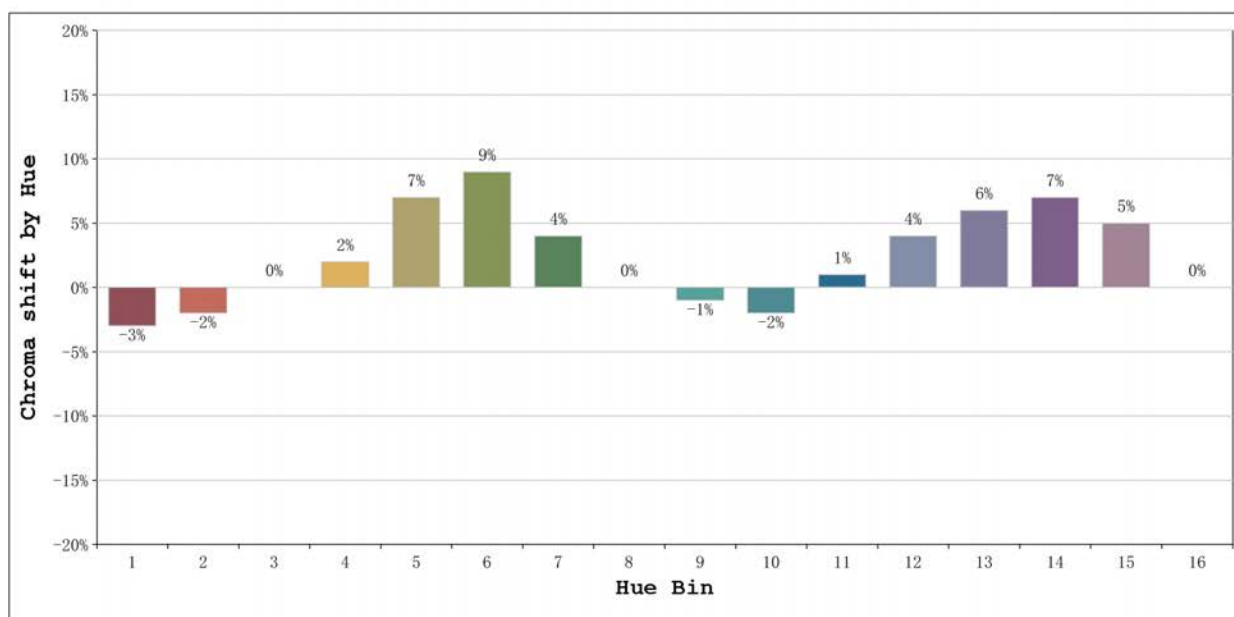
Model:Ecoled Neón Dakar 150
 Tester:Sergio Carneros
 Temperature:27Deg
 Manufacturer:Luz Negra S.L

Number: 10.291
 Date:2024-10-03 12:31:59
 Humidity:40%
 Remarks:1500mm de neon



Model:Ecoled Neón Dakar 150
 Tester:Sergio Carneros
 Temperature:27Deg
 Manufacturer:Luz Negra S.L

Number: 10.291
 Date:2024-10-03 12:31:59
 Humidity:40%
 Remarks:1500mm de neon



			Graphic shift(%)	
Hue Bin	Hue Angle	Rf	Chroma	Hue
1	0.0° - 22.5°	91	-3	0
2	22.5° - 45.0°	91	-2	4
3	45.0° - 67.5°	81	0	9
4	67.5° - 90.0°	87	2	6
5	90.0° - 112.5°	88	7	5
6	112.5° - 135.0°	87	9	0
7	135.0° - 157.5°	87	4	-5
8	157.5° - 180.0°	89	0	-5
9	180.0° - 202.5°	94	-1	-1
10	202.5° - 225.0°	89	-2	4
11	225.0° - 247.5°	84	1	10
12	247.5° - 270.0°	83	4	9
13	270.0° - 292.5°	91	6	-1
14	292.5° - 315.0°	84	7	-5
15	315.0° - 337.5°	88	5	-6
16	337.5° - 360.0°	85	0	-8

Model:Ecoled Neón Dakar 150
Tester:Sergio Carneros
Temperature:27Deg
Manufacturer:Luz Negra S.L

Number: 10.291
Date:2024-10-03 12:31:59
Humidity:40%
Remarks:1500mm de neon